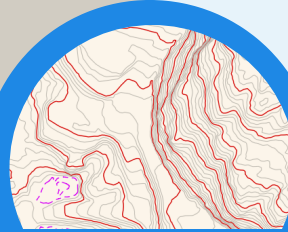


Mapping/GIS

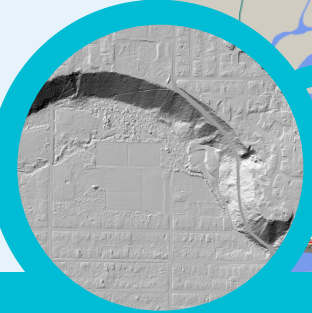
2019 FACTS AND STATS

1,000+
cemetery marker
photos linked to
cemetery records

Engineering plan/profiles
scanned in and linked to
TerraMap for internal
users



Created new 2019
countour data



Acquired 2019 10-cm
resolution colour
orthophoto



Acquired 2018/2019
LiDAR Data (Bare Earth
and Non Bare Earth)

**LiDAR = light
detection and ranging**
It uses laser light to
produce an accurate 3D
rendering of the earth's
surface.



City-owned
street lights
and fibre
optic layers
created and
added to
TerraMap



CAD/GIS Data Packages prepared
and delivered to assist:

Economic Development Investment Portal | Storm
Water Master Plan | Grant Applications | University
Students | TORCA | Developers | Ministry of
Forests BC Wildfire Service | Integrated Cadastral
Information Society

Reviewed and
researched
replacement software
for TerraMap in 2020.

