

***A COMMITTEE OF THE WHOLE MEETING WILL BE  
HELD IN MUNICIPAL COUNCIL CHAMBERS AT CITY HALL ON  
THURSDAY, OCTOBER 19, 2023 AT 12:00 PM***

*Please participate in the meeting by observing or listening in one of the following ways:*

- 1. Attend in person at City Hall (Council Chambers) – 3215 Eby Street*
- 2. Watch through our website at <https://www.terrace.ca/city-hall/council-webcasts>*
- 3. Watch through Facebook at <https://www.facebook.com/CityofTerrace>*
- 4. Join Teams by Desktop Computer or Mobile Device at  
[https://teams.microsoft.com/l/meetupjoin/19%3ameeting\\_NzBiNmI4NWUtMGFINS00ODM0LTgxM2MtOWYzODRhZjM1Y2E4%40thread.v2/0?context=%7b%22Tid%22%3a%2227d34b3b-ae23-4427-959c-581bf8de7189%22%2c%22Oid%22%3a%22d1633cac-da7c-4834-9468-1da071e67573%22%7d](https://teams.microsoft.com/l/meetupjoin/19%3ameeting_NzBiNmI4NWUtMGFINS00ODM0LTgxM2MtOWYzODRhZjM1Y2E4%40thread.v2/0?context=%7b%22Tid%22%3a%2227d34b3b-ae23-4427-959c-581bf8de7189%22%2c%22Oid%22%3a%22d1633cac-da7c-4834-9468-1da071e67573%22%7d)*
- 5. Join Teams by Regular Phone Call:*
  - 1-250-960-2526 (long distance charges may apply)*
  - Conference ID: 835 166 813#*

***A G E N D A***

***A. COMMITTEE OF THE WHOLE***

- 1. British Columbia Lottery Corporation – Proposed Amendments to Gaming Machine Cap*

*R. Mattiuz  
Corporate Officer*



# City of Terrace

## COMMITTEE OF THE WHOLE REPORT

### Committee of the Whole

**MEETING:** Committee of the Whole - BCLC

**TO:** Maggie Hall, City Manager for Mayor and Council

**FROM:** Michael Pucci, Lands and Economic Development Manager

**SUBJECT:** Proposed Amendments to Gaming Machine Cap

#### **RECOMMENDATION(S):**

That Council:

1. Accept BCLC's request to increase the number of slot machines allowed at Chances Casino Terrace to 150; and
2. Consider removing gaming machine cap within the City of Terrace.

#### **PURPOSE:**

To increase municipal revenues by accepting British Columbia Lottery Corporation's (BCLC) request to increase the number of gaming machines at Chances Casino Terrace.

#### **BACKGROUND INFORMATION:**

Under the Gaming Control Regulation, local governments can place a limit on the number of gaming machines, limiting the number of games in a gambling facility. Currently, Chances Casino Terrace, with its complement of 75 slot machines, is operating at the municipal cap. This is half of the 150 units that BCLC indicates could be supported by the current footprint and market at Chances Casino Terrace.

As a host local government, the City of Terrace receives 10% of gaming revenues from Chances Casino per year. In 2022 Terrace received \$773,000 in gaming revenues. 2023's first two quarters indicate the City could expect slightly more than last year's \$773,000.

In early summer 2023, BCLC began engaging with staff about the opportunity to increase the number of gaming units at Chances Casino Terrace. Staff have been working with BCLC during this time to bring the proposed change in direction forward to Council in an effort to increase municipal revenues.

#### **DISCUSSION AND ANALYSIS:**

BCLC indicates that Terrace's gaming machines are the busiest in the province.

Currently, the City-imposed cap is at 75 machines. The request from BCLC is to have the ability to add over time, up to 150 units in total; 50 units initially and based on demand, up to an additional 25 units. The current building design of the casino can accommodate a maximum of 150 units.

In 2022 the city received \$773,000 in gaming revenue. These funds are used for a variety of capital projects, and in the draft 2024-2028 capital plan, are earmarked for sidewalk resurfacing, pavement overlays, and other capital works.

BCLC conducted a third-party study which indicated if the amount of gaming machines increased to 150 units, the City could expect to see 25% more revenue, approximately \$200,000. This brings expected gaming revenue in 2023 to around 1 million dollars, positioning the facility more in line with its similar demographic and sized counterparts.

Of note, BC gaming centres are required to offer entertainment, food, and beverage service. They monitor the gaming floor and parking lot for signs of negative behaviour. The Game Sense and Game Break programs are promoted as well as self-regulated gaming. The Game Sense program has an in-person advisor on premises, provides access to counseling supports, and through the Game Break program, allows individuals to have their name on do not serve lists. BCLC has indicated that they will continue to promote their robust programming in Terrace. The RCMP provincially have no study linking the number of machines to increases in crime. As such it is not believed by law enforcement that adding to the licensed limit would significantly add negative effects on the community.

**FINANCIAL IMPLICATIONS:**

Undetermined additional gaming revenue.

**COUNCIL STRATEGIC FOCUS AREA(S):**

- ☐ Livable Community
- ☐ Community Wellness
- ☐ Organizational Strength and Cultural Awareness
- ☐ Responsible Asset Management
- ☒ Grow Revenues and Economic Development
- ☐ Not Applicable

**COMMUNICATIONS:**

Notification of Council's decision regarding BCLC's request will be provided to BCLC.

**SUMMARY AND CONCLUSION:**

In an effort to increase municipal revenues, staff recommend increasing the number of allowable gaming machines at Chances Casino Terrace to 150 and further recommend that Council consider removing the gaming cap altogether.

**Prepared by:**

Michael Pucci



## City of Terrace Opportunity

October 2023

# Agenda

## Part 1

Generating Win-Wins for the City of Terrace

---

## Part 2

Current Facility & Market Opportunity

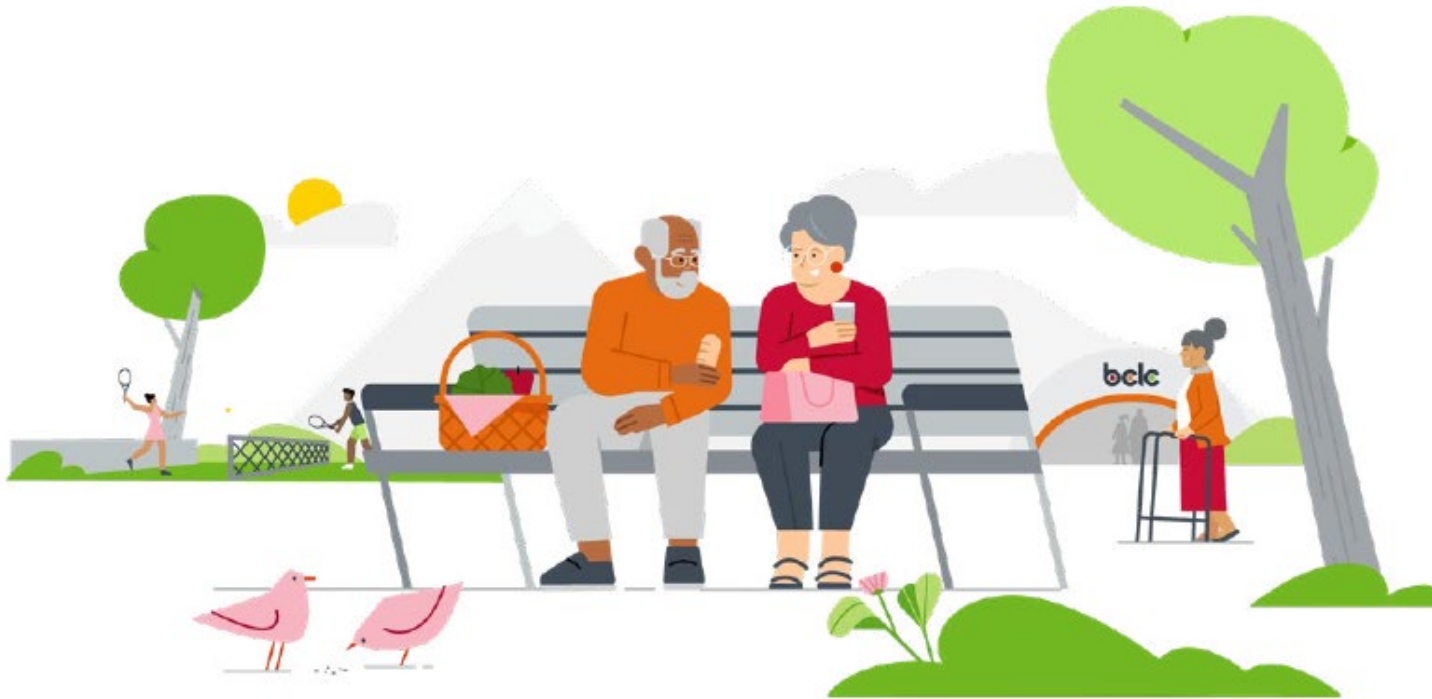
---

## Part 3

Process for Next Steps & Questions

---

# Generating Win-Wins for The City of Terrace



# Where the Money Goes

**87¢** of every dollar played goes  
back into the Province



# Revenue to Terrace – HLG Commission

The City has received **\$8.29 million** since the opening of Chances Casino Terrace in 2009

- **\$812,000 (2022/23)**
- \$564,000 (2021/22)
- \$727,000 (2019/20)

The City of Terrace used a portion of its share of provincial gaming revenue in 2022 to support community grants.





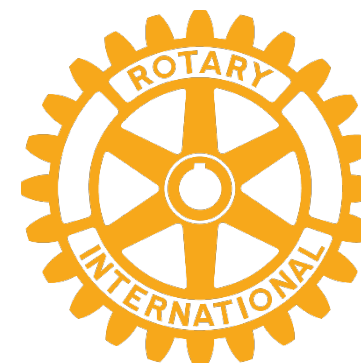
# Community Gaming Grants

- The Province of B.C. allocates **\$140 million** annually to community organizations through the Community Gaming Grant Program
- **22** organizations in Terrace received funding last year
- **\$803,000** went to support those organizations in the human and social services sector, public safety, sports, arts and culture, and parent advisory councils





Kermode Friendship Society  
A Registered Charitable Organization



# Economic Impact



**\$86,000** paid by Chances Terrace in municipal taxes in 2022



**65** local jobs



Chances Casino Terrace works with many local vendors including: Tri-City Refrigeration, Hartman Electric, Aqua Plumbing, J&F Distributors

# Direct Community Support

Chances Terrace has provided community support to numerous charitable organizations in Terrace, including:



# Player Health Ambition

- BCLC's ambition is to have the healthiest players in the world
- Our player health ambition is structured around four key commitments that help encourage healthy play:
  - Informed decisions
  - Positive Play
  - Referral and support
  - Safer products and environments



# Player Health – Game Break

In January 2023, BCLC launched Game Break, an updated self-exclusion program with an active reinstatement process that strives to reduce stigma and empower individuals to make the right choices for themselves.

When a Game Break term is completed, individuals take part in an online program that encourages self-reflection and awareness before they return to gambling, if they chose to at all. If they are not ready, they have the option to extend their break.

# Player Health - GameSense

- GameSense gives players information on how different forms of gambling work along with a few basic principles, so they have the knowledge they need to make informed decisions.
- The GameSense Advisor (GSA) program offers education, support and referral services to facilitate healthy approaches to gambling and reduce harm

## GAMESENSE ADVISOR PROGRAM

### EDUCATION

Helping players make informed decisions about gambling.

**Support & Referral**  
Information and referral to problem gambling resources.  
Assist with VSE.

**Supportive & Knowledgeable**  
Welcoming, friendly and relatable presence on the gaming floor.

**Awareness**  
Venue staff training.  
Educational programming for players.



# Current Facility & Market Opportunity



# Chances Casino Terrace

- Opened in January 2009
- An entertainment facility that offers:
  - 74 Slots, 5 e-Table games, Bingo
  - Dining
- Player utilization performing above provincial average - demand for games exceeds supply offered

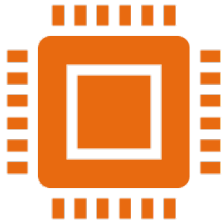


# Terrace Market Opportunity

- An opportunity exists to enhance the overall player experience, generating further win-wins
- ~25% Host Local Government Commission increase
- Based on market demand immediately accommodate up to 124 slots with additional room for future growth (up to 150 slots)
- Exact product mix to be determine; phased in over time

# Process for Next Steps & Questions

# Approval Process



Under the GCR, BCLC must get approval from the host local government (HLG)



Council vote required



Approval must be in the form of a resolution or letter

# Contact Us

## **Jerry Williamson**

Director, Gaming Facility & Development

[jwilliamson@bcllc.com](mailto:jwilliamson@bcllc.com)

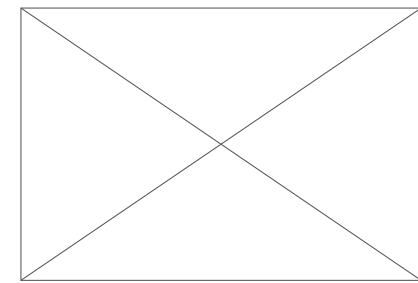
## **Jordan O'Genski**

Interim Director, Social Purpose & Community and  
Stakeholder Engagement

[JOGenski@BCLC.com](mailto:JOGenski@BCLC.com)



PROJECT:



DRAWING TITLE:

Chances Terrace

SCALE: 1/8" = 1"

REVISION/DATE/INITIAL:

No.	YY	MM	DD	Init.
01	18	10	03	BL
02	19	04	12	CF
03	21	06	04	CF
04				
05				
06				
07				
08				
09				



### BCLC SIGN LEGEND

- (A) POWERBUCKS
- (B) NEW END-CAPS
- (C) EVERI TOURNAMENT

BCLC Equipment	
Slots - Upright (Standard)	0
Slots - Upright (Ergo)	0
Slots - Upright (VSR)	30
Slots - Upright Off (VSR)	0
Slots - Blank Base (VSR)	0
Slots - Bar Top	0
Slots - Slant Top	42
Slots - Slant Top Off	0
Slots - Big Monte	0
Slots - Titan	0
Slots - IGT CrystalCurve Ultra	0
Slots - IGT CrystalDual+ Stepper	0
Slots - IGT MegaTower	0
Slots - Konami KX43 Circular Display	0
Slots - Total	72
Tables - Money Wheel	0
Tables - Craps	0
Tables - Bac 3 Seats	0
Tables - Bac 5 Seats	0
Tables - Classic Bac	0
Tables - Midi Bac	0
Tables - Poker 13	0
Tables - Dbl Roulette Table	0
Tables - Roulette Table	0
Tables - Squeeze Play	0
Tables - Standard Table	0
Tables Manned - Total	0
eTables - Lightning Poker 9	0
eTables - Lightning Poker 10	0
eTables - Poker Mate 8	0
eTables - Rapid Roulette 22	0
eTables - Fusion BJ	1
eTables - Touch Table Reel Roulette	0
eTables - Touchbet Station	0
eTables - Touchbet Station	0
eTables - IGT MP-Series	0
eTables - Super Sic Bo	0
eTables - IGT Mojo	0
eTables - IGT Mojo Off	0
eTables - Total	1
Plexi Glass UR - Double	0
Plexi Glass UR - Single	0
Plexi Glass - Free Standing	0
Plexi Glass ST - Double	0
Plexi Glass ST - Single	0
Plexi - Total	0
GMS - CAT5e Data to Banks	28
GMS - Switches	14
GMS - 24-Port Switch	14
GMS - 12-Port Switch	0

This document is not to be reproduced or distributed without the consent of BCLC Security.



CASINO &  
COMMUNITY GAMING

FACILITY DEVELOPMENT

74 West Seymour St.,  
Kamloops, B.C. V2C 1E2

T. (250) 828-5500

PROJECT:



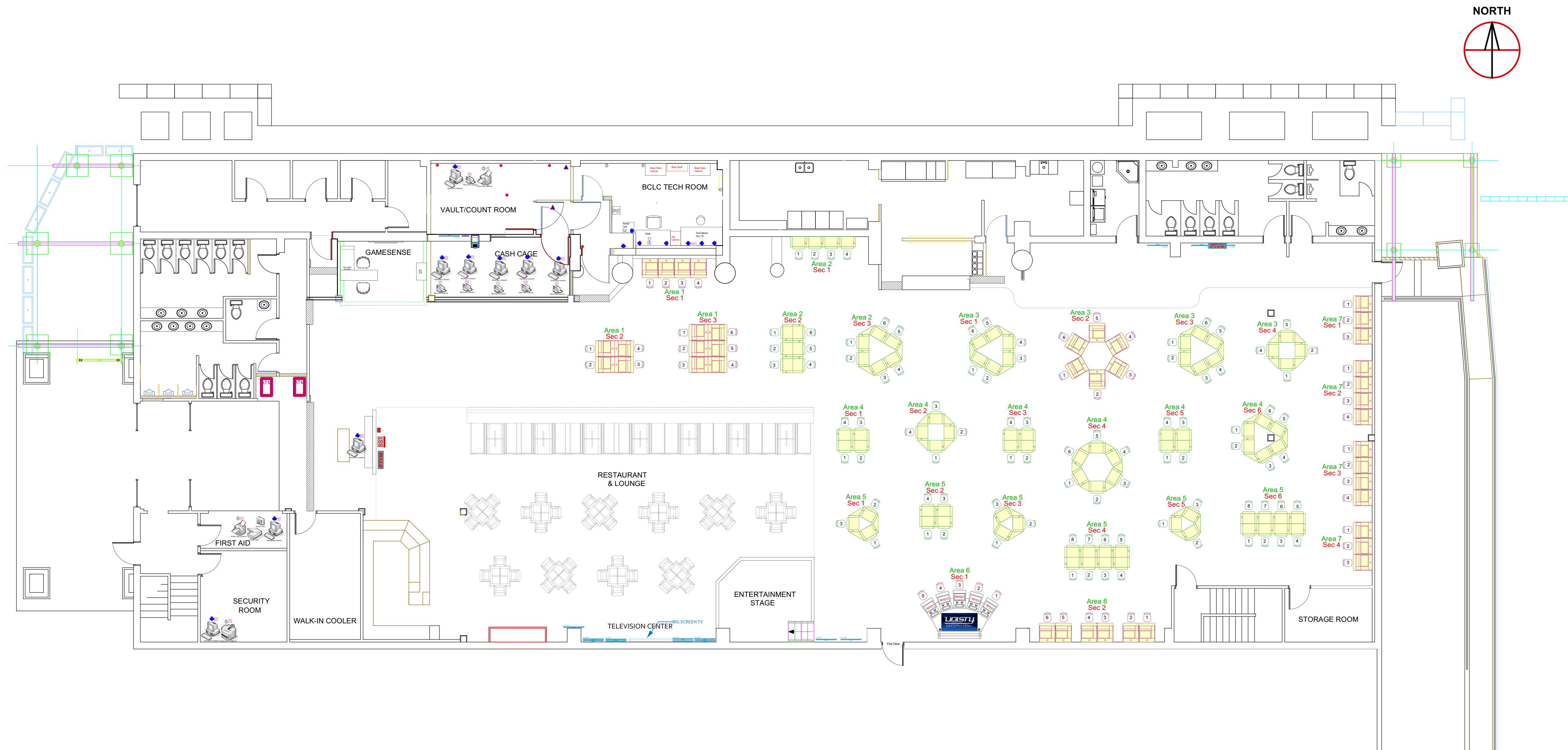
DRAWING TITLE:

Chances Terrace

SCALE: 1/8" = 1"

REVISION/DATE/INITIAL:

No.	YY	MM	DD	Init.
01	23	10	11	BL
02				
03				
04				
05				
06				
07				
08				
09				



BCLC Equipment	
Slots - Upright (Standard)	0
Slots - Upright (Ergo)	0
Slots - Upright (Ergo 18")	89
Slots - Upright (35")	0
Slots - Bar Top	0
Slots - Slant Top	40
Slots - Big Monte	0
Slots - Total	129
Tables - Money Wheel	0
Tables - Craps	0
Tables - Midi Bac	0
Tables - Poker 13	0
Tables - Roulette Table	0
Tables - Squeeze Play	0
Tables - Standard Table	0
Tables Manned - Total	0
eTables - Lightning Poker 9	0
eTables - Lightning Poker 10	0
eTables - Poker Mate 8	0
eTables - Rapid Roulette 22	0
eTables - Fusion	1
eTables - Fortune Cup	0
eTables - Touch Table Reel Roulette	0
eTables - Touchbet Roulette Station	0
eTables - IGT MP-Series	0
eTables - Super Sic Bo	0
eTables - Total	1
GMS - CAT5e Data lines to Access Switches	28
GMS - 12 Port Switches	0
GMS - 24 port Switches	14

This document is not to be reproduced or distributed without the consent of BCLC Security.