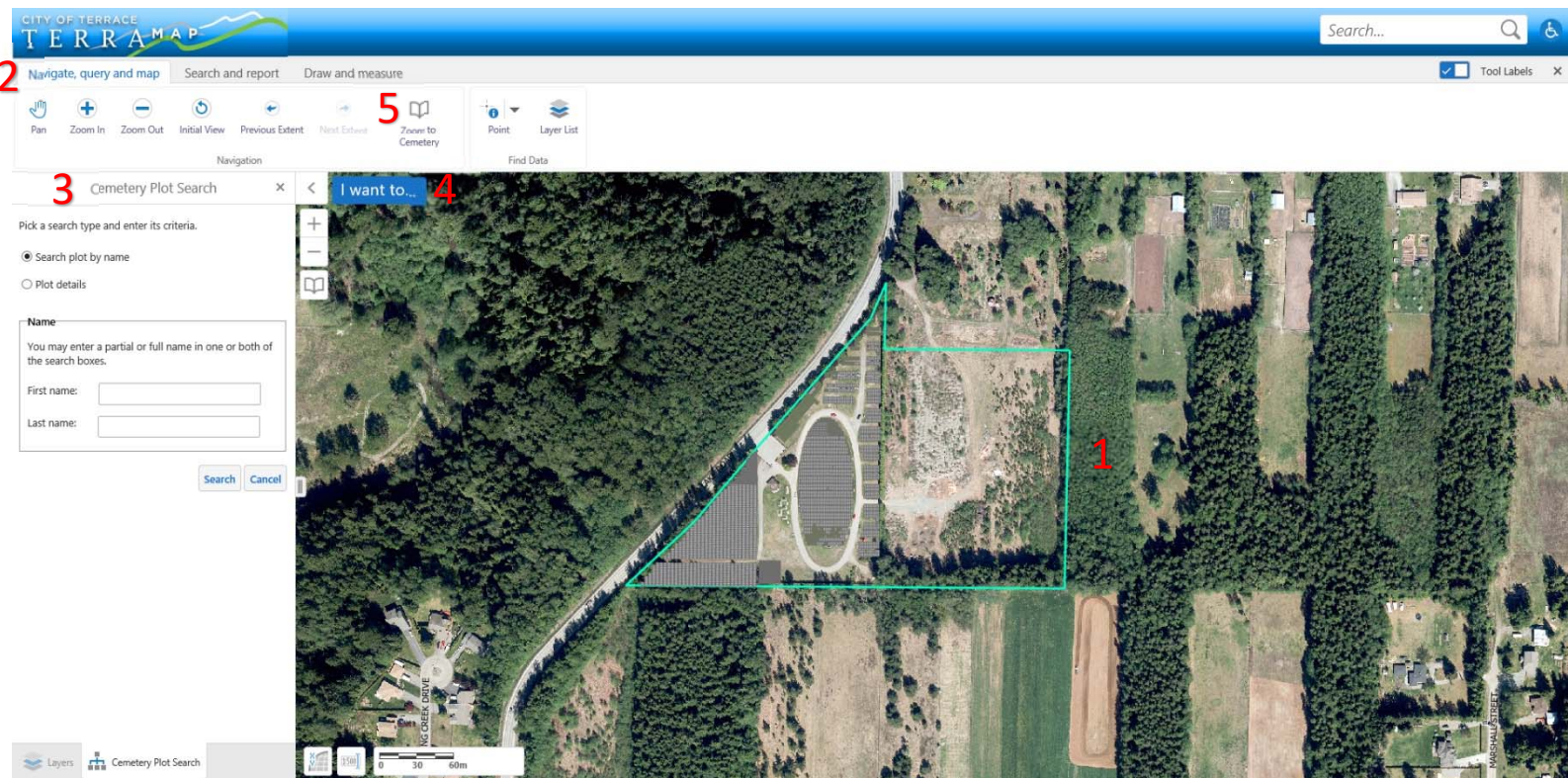


# TerraMap Cemetery Viewer Help Guide

TerraMap Public URL - <https://www.terrace.ca/business-development/maps-zoning/terramap>

TerraMap Cemetery is an interactive web map that allows users to access and view the city cemetery.

- Users can view cemetery plot details and pictures of markers if available.
- Use the Cemetery Plot Search tool to locate specific Plots.
- Use Markup tools to customize a personal map to print out.



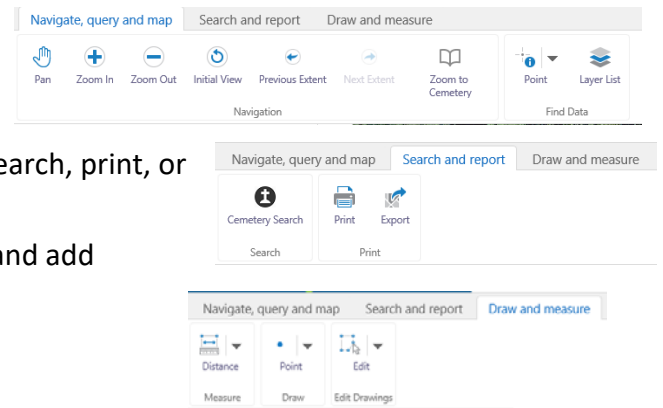
## 1 Map Window

The map window allows you to navigate the map and access the features and layers that are visible on the screen. The Navigation tools can be used to zoom in and out as well as pan around. Mouse controls can alternatively be used for navigation. (left-click and hold to pan, left-click to interact with some objects well pan is selected, mouse wheel to zoom, and right-click to access context menu.)

## 2 Tool Bar

The Tool Bar allows you to access the various tools within TerraMap. There are 3 to select from. Navigate, query and map, Search, and report, and Draw and measure.

- Navigate tools let you pan and zoom the map, access the Zoom to Cemetery, and use the identify tool.
- Search and report tools allow you to use the Cemetery Search, print, or export map tools.
- Draw and measure tools allow you to measure distance and add markups to the map.



## 3 Layer List and Search tool

The layer list allows you to toggle the layers that display on the screen. The cemetery search tool (Open by default) allows you to search for a Plot by Name or Plot Details.

## 4 I Want To...

Quickly access the point select and Cemetery Search Tools.



## 5 Zoom to Cemetery

Allows you to zoom to the extent of the Selected Cemetery.

