

## CEMETERY VIEWER

Development Services Department  
250-615-4022 | www.terrace.ca



### What is the Cemetery Viewer?

Cemetery Viewer is an interactive web map that allows users to access and view the city cemetery. It uses the same technology as TerraMap.

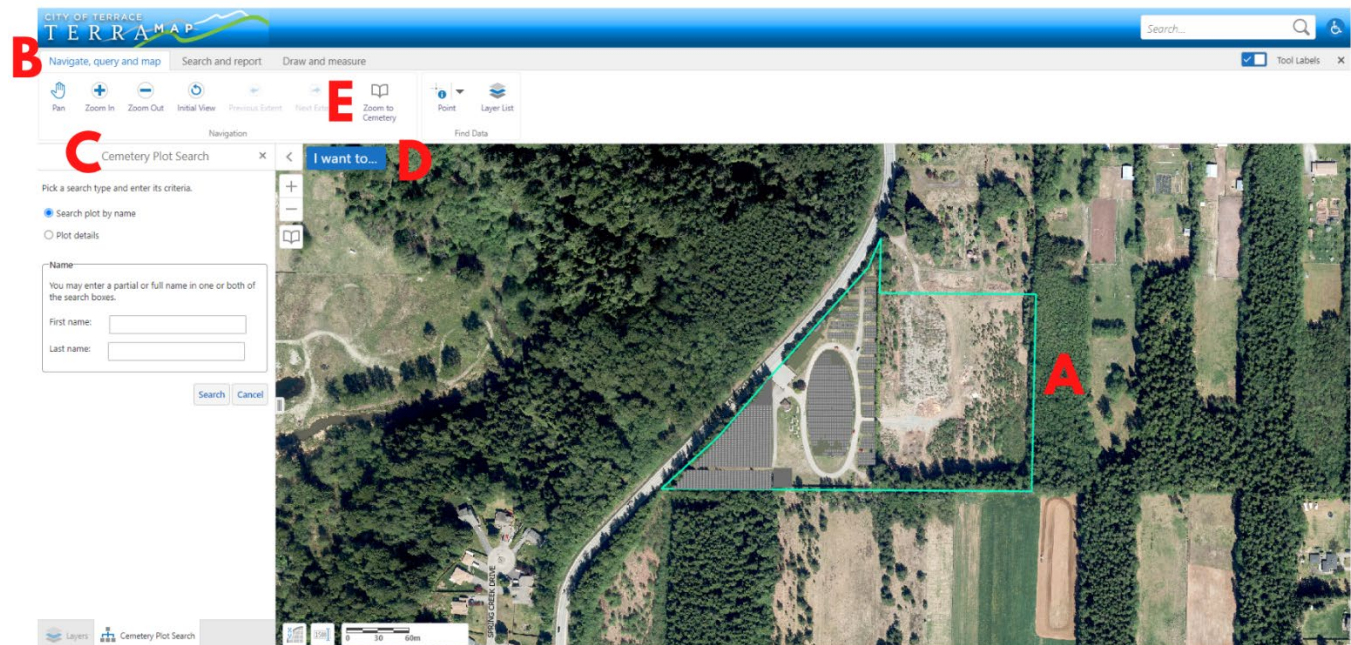
- View cemetery plot details and pictures of markers if available.
- Use the Cemetery Plot Search tool to locate specific plots.
- Use markup tools to customize a personal map to print out.

### How do I access the Cemetery Viewer?

To access the Cemetery Viewer from your computer, tablet, or smart phone, click here: [www.terrace.ca/cemetery](http://www.terrace.ca/cemetery). Or, go to the City of Terrace website at [www.terrace.ca](http://www.terrace.ca) and click the **MAPS** link at the bottom of the page. Click the **TERRAMAP** link and then scroll down and click **Launch Cemetery Viewer**.

Once you have launched the Cemetery Viewer, you must click **OK** to accept the terms of use conditions before entering the site.

### What are the different features of the Cemetery Viewer?



**A – Map Window**

**B – Toolbar**

**C – Layer List & Search Tool**

**D – I Want To...**

**E – Zoom to Cemetery**

*Learn more about each feature on the following pages.*

## CEMETERY VIEWER

Development Services Department  
250-615-4022 | www.terrace.ca



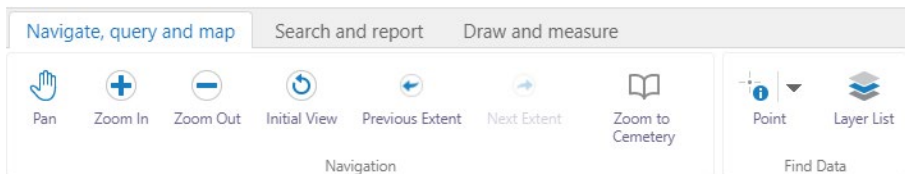
### A – Map Window

The map window allows you to navigate the map and access the features and layers that are visible on the screen.

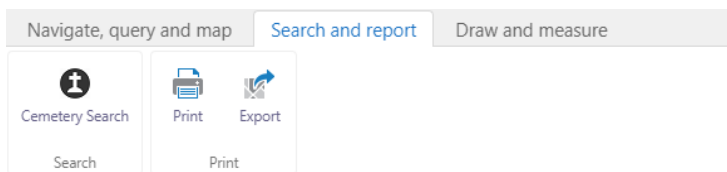
### B – Toolbar

The Toolbar allows you to access the various tools within the Cemetery Viewer. There are 3 types of tools to select from:

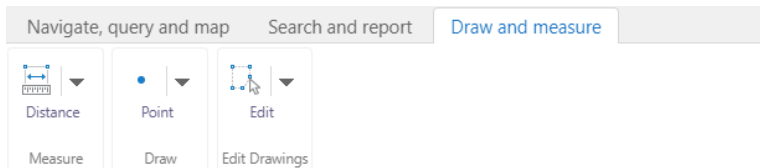
1. **Navigate, query and map:** pan and zoom the map, access the **Zoom to Cemetery** tool (E), or use the **Identify** tool.
  - *Tip:* The Navigation tools can be used to zoom in and out as well as pan around. Mouse controls can alternatively be used for navigation. Use **left-click and hold** to pan, **left-click** to interact with some objects while pan is selected, **mouse wheel** to zoom, and **right-click** to access context menu.



2. **Search and report:** use the **Cemetery Search**, **Print**, or **Export Map** tools.



3. **Draw and measure:** measure distance and add markups to the map.



**Tip:** Hold your cursor over any tool to see instructions on how to use the tool.

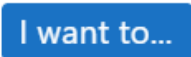
### C – Layer List & Search Tool

The layer list allows you to toggle the layers that display on the screen. The **Cemetery Search** tool (open by default) allows you to search for a plot by name or plot details.



### D – I Want To...

Quickly access the **Find Data on the Map** and **Cemetery Search** tools.



### E – Zoom to Cemetery

Allows you to zoom to either the City of Terrace or Kitsumgallum cemetery.



#### HOW TO LEARN MORE

Get started with Cemetery Viewer now:  
<https://www.terrace.ca/cemetery>