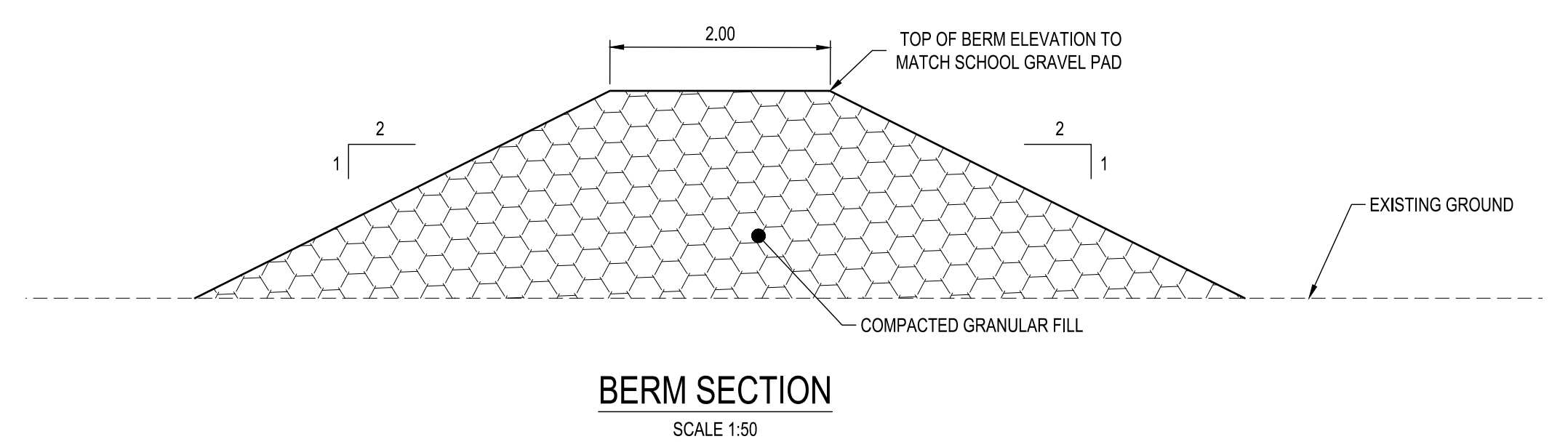


DATE: 2022-08-22 16:49 FILE: \\2321\02000\02079-00\Kitsumkalum River Flood Mitigation Plan\103 Drawings\103.1\Sheet\2321-02079-00\Propag\Kalmu.dwg
 McElhanney ANS/D - 2015-09-11

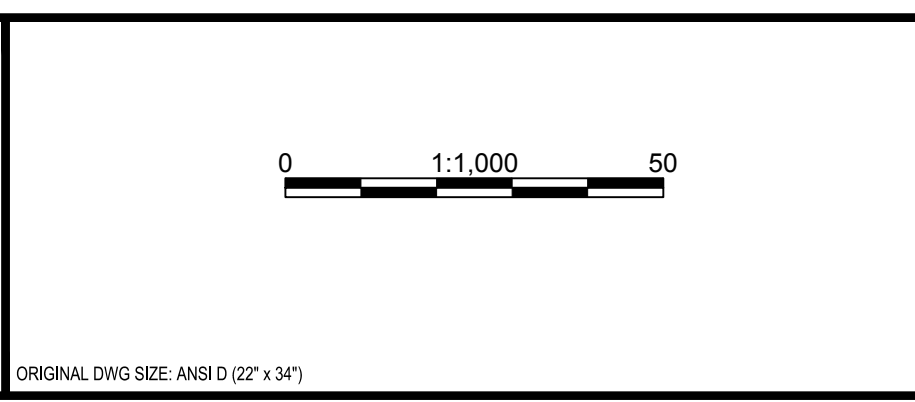


Rev	Date	Description	Drawn	Design	App'd
PA	2022-08-22	ISSUED FOR 75% REVIEW	JMD	JMD	CJH

THIS DRAWING AND DESIGN IS THE PROPERTY OF MCELHANNNEY AND SHALL NOT BE USED, REUSED OR REPRODUCED WITHOUT THE CONSENT OF MCELHANNNEY. MCELHANNNEY WILL NOT BE HELD RESPONSIBLE FOR THE IMPROPER OR UNAUTHORIZED USE OF THIS DRAWING AND DESIGN.

THIS DRAWING AND DESIGN HAS BEEN PREPARED FOR THE CLIENT IDENTIFIED, TO MEET THE STANDARDS AND REQUIREMENTS OF THE APPLICABLE PUBLIC AGENCIES AT THE TIME OF PREPARATION. MCELHANNNEY, ITS EMPLOYEES, SUBCONSULTANTS AND AGENTS WILL NOT BE LIABLE FOR ANY LOSSES OR OTHER CONSEQUENCES RESULTING FROM THE USE OR RELIANCE UPON, OR ANY CHANGES MADE TO, THIS DRAWING, BY ANY THIRD PARTY, INCLUDING CONTRACTORS, SUPPLIERS, CONSULTANTS AND STAKEHOLDERS, OR THEIR EMPLOYEES OR AGENTS, WITHOUT MCELHANNNEY'S PRIOR WRITTEN CONSENT.

INFORMATION ON EXISTING UNDERGROUND FACILITIES MAY NOT BE COMPLETE OR ACCURATE. MCELHANNNEY, ITS EMPLOYEES AND DIRECTORS ARE NOT RESPONSIBLE NOR LIABLE FOR THE LOCATION OF ANY UNDERGROUND CONDUITS, PIPES, CABLES OR OTHER FACILITIES WHETHER SHOWN OR OMITTED FROM THIS PLAN. PRIOR TO CONSTRUCTION CONTRACTOR SHALL EXPOSE LOCATIONS OF ALL EXISTING FACILITIES BY HAND DIGGING OR HYDROVAC AND ADVISE THE ENGINEER OF POTENTIAL CONFLICTS.



McElhanney

Suite 1
5008 Pohle Avenue
Terrace BC
Canada V8G 4S8
T 250 635 7163

PRELIMINARY

NOT FOR CONSTRUCTION

THIS DRAWING HAS NOT BEEN APPROVED AND MAY CONTAIN ERRORS AND OMISSIONS

CITY OF TERRACE
5003 GRAHAM AVE., TERRACE, BC, V8G 1B3

KITSUMKALUM RIVER FLOOD MITIGATION
KITSUMKALUM FLOOD MITIGATION
PLAN

Drawing No.
C-401

Project Number
2321-02079-00

Rev.
PA

DESTROY ALL PRINTS BEFORE PREVIOUS REVIEW