

CAMPGROUND INFORMATION

Hours of Operation :
Campground gate opens at
7am and closes at 11pm

Only registered campers are
permitted in the campground
and park area after 11pm

**Check In / Check Out
Procedures:** ALL campers
must report to the
Campground Operator Office
and register prior to parking or
setting up camp. Check out
time is 11am

Reservations: Campsites may
be reserved in advance, but
site numbers will NOT be is-
sued until check-in at the
Campground Operator Office

Camping Party Definition: One
to eight persons with at least
one person being 19 years of
age or older. One camping
party per site

Maximum Stay: 14 nights—
unless authorized by
Campground Operator

Campground Fees: All camp-
ers to pay current fees at time
of registration. No discounts or
refunds are provided

Quiet Hours: Quiet hours are
between 11pm and 7am.
Generators, stereos etc must
be shut off during this time

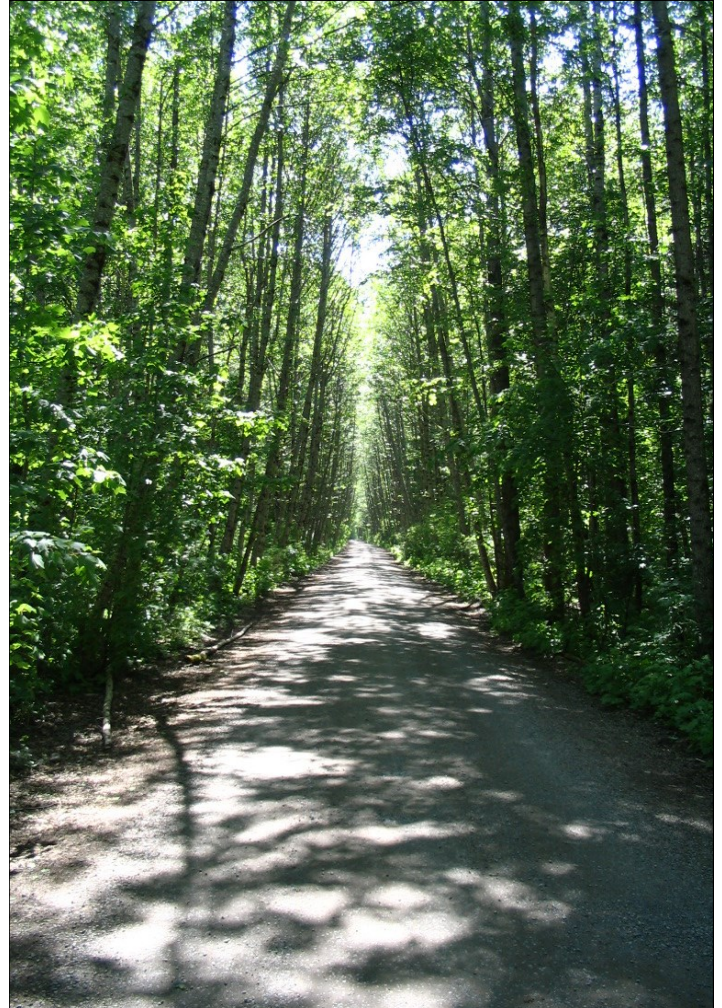
Pets: Pets must be leashed in
the campground and
playground areas. A leash
free zone is available at south
end of the Island only

Firewood: Firewood is for sale
at the caretaker's office

**911 SERVICES IN CAMPSITE
ADDRESS 4301 HIGHWAY 16 WEST**

FOR RESERVATIONS
OR INQUIRIES
PHONE 250.615.9657

FERRY ISLAND CAMPGROUND & NATURE PARK



**A UNIQUE CAMPGROUND
AND NATURE PARK NESTLED
IN THE ARMS OF THE MIGHTY
SKEENA RIVER**

FOR RESERVATIONS or INQUIRIES
PHONE 250.615.9657
EMAIL ferryislandterrace@gmail.com

FERRY ISLAND CAMPGROUND AND NATURE PARK

This 150 acre park is situated 3.5 km east from downtown Terrace on Highway 16. It boasts 103 campsites serviced with picnic tables, fire grates, municipal water and outhouses. Community showers are on location. The campground is open from May until the end of September. There is a caretaker on duty overnight.

Fees - \$20/night for non electrical campsites and \$25/night for electrical sites

Caretakers are **Don & Betty Anderson**

Reservations can be made by:

Email – ferryislandterrace@gmail.com

Phone 250.615.9657

Reservations require cash payment in advance, no refunds for cancellation

VISITOR INFORMATION

There is a 2.8 km hiking trail around the perimeter of the Island which branches into shorter trails. This is a fun walk for children of all ages. Look for unique carvings in the trees along the trail, carved by local artists. A children playground is also available.

A leash free zone is outlined on trail map at front entrance.

Fisherman's Park boat launch is located 10 minutes west of Ferry Island along Highway 16.

A sani dump is available 1 km west of the Island at the Terrace Info Centre on Highway 16.

Laundry facilities are situated downtown Terrace.

Aquatic Centre located 4540 Park Street.

