

FERRY ISLAND CAMPGROUND & NATURE PARK

CAMPGROUND REGULATIONS

Hours of Operation :
Campground gate opens at 7am and closes at 11pm.

Only registered campers are permitted in the campground and park area after 11pm.

Check In / Check Out Procedures: Check in time for first-come, first-served campsites is between 7am and 11pm.

Reservations: Reservation will only be accepted with cash or credit card payment in advance. **NO REFUNDS** will be issued for cancellation.

Fee Collection: The Island caretaker will collect the camping fee at your campsite. During busy times you may be required to check in at the office to pay for your campsite. Payment is cash only. You must display your registration receipt on the campsite number post.

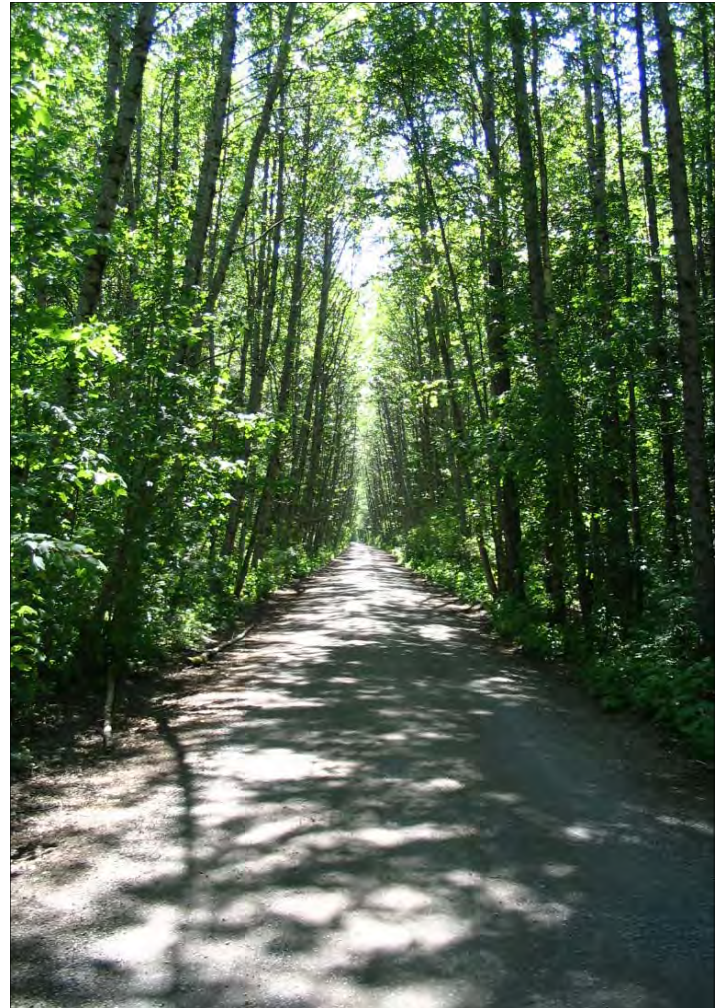
Camping Party Definition: Camping fees apply per unit basis. Extra fees will be applied on additional vehicles.

Quiet Hours: Quiet hours are between 11pm and 7am. Generators, stereos etc must be shut off during this time.

Pets: Pets must be leashed in the campground and playground areas. A leash free zone is available at south end of the Island only.

Firewood: Firewood is for sale at the caretaker's office.

FOR RESERVATIONS
PHONE 250.615.9657
OR 250.615.2652



A UNIQUE CAMPGROUND
AND NATURE PARK NESTLED
IN THE ARMS OF THE MIGHTY
SKEENA RIVER

FOR RESERVATIONS
PHONE 250.615.9657
OR 250.615.2652

FERRY ISLAND CAMPGROUND AND NATURE PARK

This 150 acre park is situated 3.5 km from downtown Terrace on Highway West 16. It boasts 103 campsites serviced with picnic tables, fire grates, municipal water and outhouses. Community showers are on location. The campground is open from May until the end of September. There is a caretaker on duty overnight.

Fees - \$17/ night for non electrical campsites and \$21.50/night for electrical sites.

Caretakers are **Don & Betty Anderson**

Reservations can be made by:

Email – ferryisland@hotmail.com

Phone 250.615.9657

Or 250.615.2652

Reservations require cash payment in advance, no refunds for cancellation

VISITOR INFORMATION

There is a 2.8 km hiking trail around the perimeter of the Island which branches into shorter trails. This is a fun walk for children of all ages. Look for unique carvings in the trees along the trail, carved by local artists. A children playground is also available.

A leash free zone is outlined on trail map at front entrance.

Fisherman's Park boat launch is located 10 minutes west of Ferry Island along Highway 16.

A sani dump is available 1 km west of the Island at the Terrace Info Centre on Highway 16.

Laundry facilities are situated downtown Terrace.

Aquatic Centre located 4540 Park Street.

