

## CAMPGROUND REGULATIONS

**Hours of Operation :**  
Campground gate opens at 7am and closes at 11pm.

Only registered campers are permitted in the campground and park area after 11pm.

**Check In / Check Out Procedures:** Check in time for first-come, first-served campsites is between 7am and 11pm.

**Reservations:** Reservations for the 2011 season will begin March 15. Reservations for the 2012 season will be taken by caretaker up to September 30, 2011.

**Fee Collection:** The Island caretaker will collect the camping fee at your campsite. During busy times you may be required to check in at the office to pay for your campsite. Payment is cash, debit, or credit card. You must display your registration receipt on the campsite number post.

**Camping Party Definition:** Camping fees apply per unit basis. Extra fees will be applied on additional vehicles.

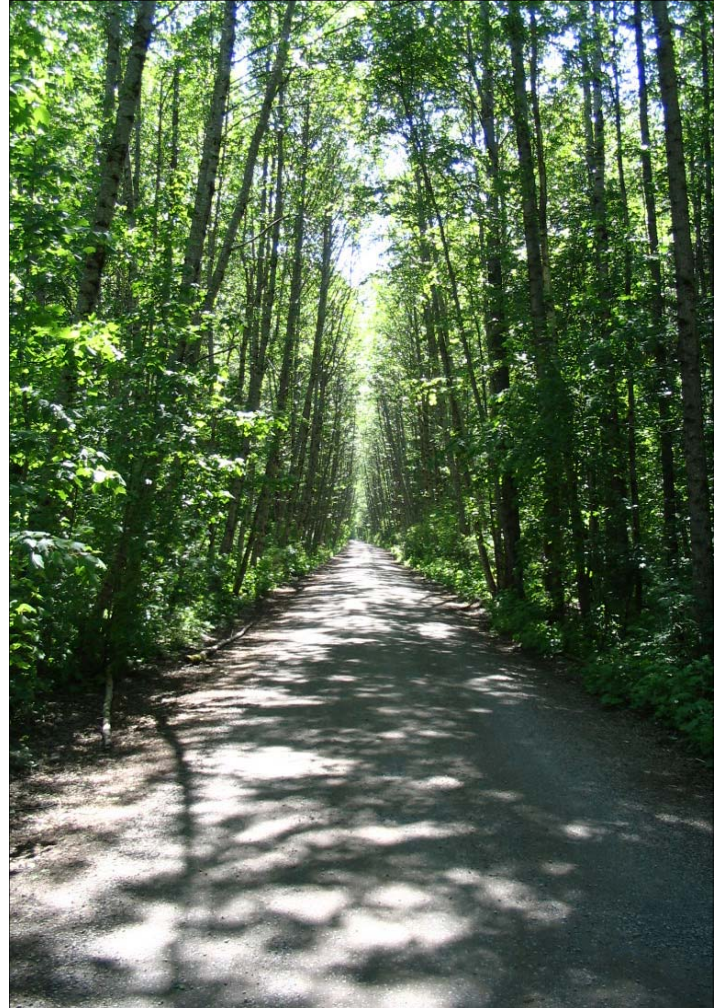
**Quiet Hours:** Quiet hours are between 11pm and 7am. Generators, stereos etc must be shut off during this time.

**Pets:** Pets must be leashed in the campground and playground areas. A leash free zone is available at south end of the Island only.

**Firewood:** Firewood is for sale at the caretaker's office.

FOR RESERVATIONS  
PHONE 250.615.9657  
OR 250.635.3530

# FERRY ISLAND CAMPGROUND & NATURE PARK



A UNIQUE CAMPGROUND  
AND NATURE PARK NESTLED  
IN THE ARMS OF THE MIGHTY  
SKEENA RIVER

FOR RESERVATIONS  
PHONE 250.615.9657  
OR 250.635.3530

## FERRY ISLAND CAMPGROUND AND NATURE PARK

This 150 acre park is situated 3.5 km east from downtown Terrace on Highway 16. It boasts 103 campsites serviced with picnic tables, fire grates, municipal water and outhouses. Community showers are on location. The campground is open from May until the end of September. There is a caretaker on duty overnight.

Fees - \$17/ night for non electrical campsites and \$21.50/night for electrical sites.

Caretakers are **Don & Betty Anderson**

Reservations can be made by:

Email – [ferryislandterrace@gmail.com](mailto:ferryislandterrace@gmail.com)

Phone 250.615.9657

Or 250.635.3530

Reservations require cash payment in advance, no refunds for cancellation

## VISITOR INFORMATION

There is a 2.8 km hiking trail around the perimeter of the Island which branches into shorter trails. This is a fun walk for children of all ages. Look for unique carvings in the trees along the trail, carved by local artists. A children playground is also available.

A leash free zone is outlined on trail map at front entrance.

Fisherman's Park boat launch is located 10 minutes west of Ferry Island along Highway 16.

A sani dump is available 1 km west of the Island at the Terrace Info Centre on Highway 16.

Laundry facilities are situated downtown Terrace.

Aquatic Centre located 4540 Park Street.

