

**TOWARDS A MORE
WELCOMING AND
INCLUSIVE TERRACE
Co-op Property
Dialogues**

December 2, 2010

*Presentation by
Skeena Diversity Society*

VISION

Skeena Diversity Society believes in the strength and creativity of an inclusive and diverse community.

ideasdiversityrespectpartnershipunity



Towards a More Welcoming and Inclusive Terrace – December 2010

PROJECT

Working on the Welcoming and Inclusive Communities and Workplaces Program

Funding provided by the Government of
Canada and the Province of British Columbia

ideasdiversityrespectpartnershipunity



Towards a More Welcoming and Inclusive Terrace – December 2010



ideas diversity respect partnership unity



Towards a More Welcoming and Inclusive Terrace – December 2010

COMMUNITY ENGAGEMENT

Ideas
Diversity
Respect
Partnership
Unity

ideasdiversityrespectpartnershipunity



Towards a More Welcoming and Inclusive Terrace – December 2010

COMMUNITY ENGAGEMENT

Belonging
Ownership
Pride
Responsibility
Sustainability

ideas diversity respect partnership unity





towards a more
WELCOMING & INCLUSIVE TERRACE

Cultural vitality

Environmental responsibility

Economic viability

Social equity

A central graphic of a flower with ten colorful petals (green, brown, pink, yellow, purple, blue, red, orange, blue, purple) and a white center containing the text "UNITY in Diversity".

CO-OP PROPERTY PLAN

- Provide economic opportunities
- A place to meet, learn and gather
- Encourage collaboration
- Preserve and showcase local culture, heritage and arts
- Encourage healthy & sustainable living

ideasdiversityrespectpartnershipunity



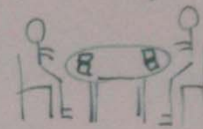


TERRACE

BUSINESSES MEETING



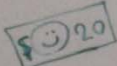
Library



MUSEUM

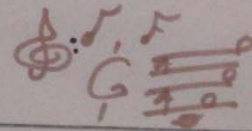


Social



Kitchen

RECREATION



Youth



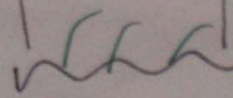
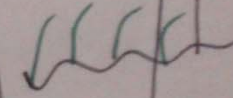
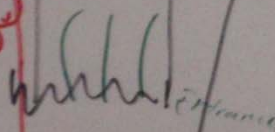
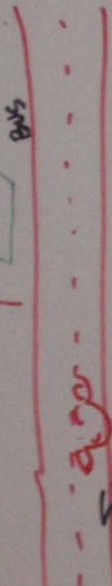
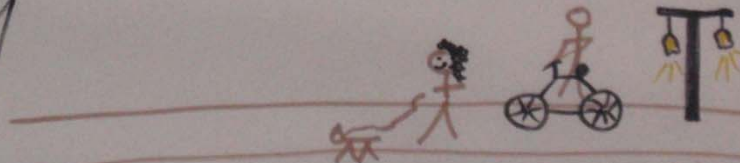
WELCOME EVERYONE

Economics

ENVIRONMENT

The New Kermode site ON Park Ave.

"S.C.I." OLD MILL SITE



CO-OP PROPERTY PLAN

It's a huge project! We can't tackle it all at once but in phases.

It will take a collaborative effort of balancing competing goals and needs

ideasdiversityrespectpartnershipunity



Towards a More Welcoming and Inclusive Terrace – December 2010

COMMUNITY DIALOGUE

Saturday, December 4
10 am – 4 pm

ideasdiversityrespectpartnershipunity



Towards a More Welcoming and Inclusive Terrace – December 2010

COMMUNITY DIALOGUE

The spirit of dialogue is guided
by a give and take in the
mutual search for meaning

ideasdiversityrespectpartnershipunity



COMMUNITY DIALOGUE

- Generosity of spirit
- Discipline in participation
- Speaking personally
- Listening past defenses, past the familiar, past our own certainties
- Inquiring into assumptions

ideasdiversityrespectpartnershipunity



COMMUNITY DIALOGUE

- Importance of the built environment
- Diverse experiences
- Collaboration
- Honouring the history

ideasdiversityrespectpartnershipunity



COMMUNITY DIALOGUE

Looking to build on tonight's meeting

- What do we need in the community?
- How and who will it benefit?
- Identifying sources of funding
- Greater community engagement
- Next steps & partnership with the City

ideasdiversityrespectpartnershipunity



Towards a More Welcoming and Inclusive Terrace – December 2010

COMMUNITY DIALOGUE

Saturday, December 4
10 am – 4 pm

with
Nathan Edelson and Norma-Jean McLaren

ideasdiversityrespectpartnershipunity



SKEENA DIVERSITY SOCIETY

Centre: 4617 Lazelle Ave.

250-635-6530

www.skeenadiversity.com

